



Kempinski Hotel
Corvinus

BUDAPEST



PREMIUM COLLECTION

– the finest selection of rooms & suites –

Kempinski
HOTELIERS SINCE 1897

PREMIUM COLLECTION

Rooms & Suites at Kempinski Hotel Corvinus Budapest

Kempinski Hotel Corvinus Budapest's rooms renovation early 2018 has created sleek, refreshed and reconstructed spaces, accented with natural motifs gently complementing the iconic city views that echo the soft buzz of Budapest.

The generous expanse of our rooms is enhanced by the delicacy of the dainty field flowers pattern of the new carpets, streamlined with accessories such as satin pillows reflecting the clear blue sky and trims as gold as sun on the blackout curtains.



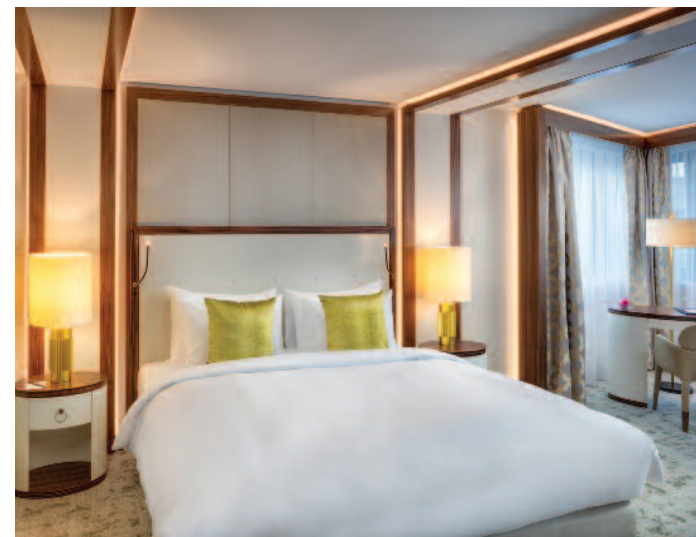
Premium Grand Deluxe Rooms

Defined by Alex Kravetz's vision of contemporary luxury, Grand Deluxe Rooms combine the resulting comfort and serenity with the electrifying vista spanning over Erzsébet Park, the Budapest Eye ferris wheel, the St Stephen's Basilica and the historical city centre's signature edifices. These rooms accommodate a luxurious king size bed, and a spacious bathroom that features both a shower and a bathtub. Every such room has a Nespresso coffee maker.



FACTS & FIGURES

- no. **Inventory:** 25
- sq **Size:** 35-43 sqm / 377-463 sqft
- 👁️ **View:** Various
- 🛏️ **Bed:** Eastern King
- 🛏️ **Extra bed:** Extra bed not available
- 🚿 **Bathroom:** Bath, Shower
- 👤 **Maximum occupancy:** 2 Adults
- 🚪 **Interconnecting:** No



FACTS & FIGURES

- no. **Inventory:** 5
- sq **Size:** 45-65 sqm / 463-700 sqft
- eye **View:** Various
- bed **Bed:** Eastern King
- beds **Extra bed:** One extra bed possible
- bath **Bathroom:** Bath, Shower
- people **Maximum occupancy:** 3 Adults
- door **Interconnecting:** Suites 732 & 832 to adjoining Corvinus Collection Suites

Premium Junior Suites

Generously spacious in size, Premium Junior Suites pamper the senses, enhancing your spatial experience with magnificent views of either the lush greenery of Erzsébet Park and its ferris wheel, the Budapest Eye, or the iconic heritage architecture of Fashion Street. The living room features a sofa and coffee table, while the bathroom has both a shower and a bathtub. A Nespresso coffee maker is also available in these rooms.



Executive Suites

Our Executive Suites translate the Kempinski joie de vivre into an exceptionally sleek and expansive space, complete with a living room, bedroom with a king size bed, and a bathroom offering both a shower and bathtub as well as twin basins. The splendid contemporary aesthetic, featuring the hotel's own artwork, is complemented by a sprawling, stunning vista of Erzsébet Park and Budapest Eye, the ferris wheel, while two Executive Suites also benefit from romantic bay view windows.

FACTS & FIGURES (Executive Suite 526/626)

- no. **Inventory:** 2
- sq **Size:** 57 sqm / 614 sqft
- eye **View:** Ferris wheel view
- bed **Bed:** Eastern King
- beds **Extra bed:** Yes
- bath **Bathroom:** Bath, Shower
- people **Maximum occupancy:** 3 Adults
- door **Interconnecting:** No

FACTS & FIGURES (Executive Suite 614/714)

- no.** Inventory: 2
- sq** Size: 57 sqm / 614 sqft
- View:** Ferris wheel view
- Bed:** Eastern King
- Extra bed:** Yes
- Bathroom:** Bath, Shower
- Maximum occupancy:** 3 Adults
- Interconnecting:** No



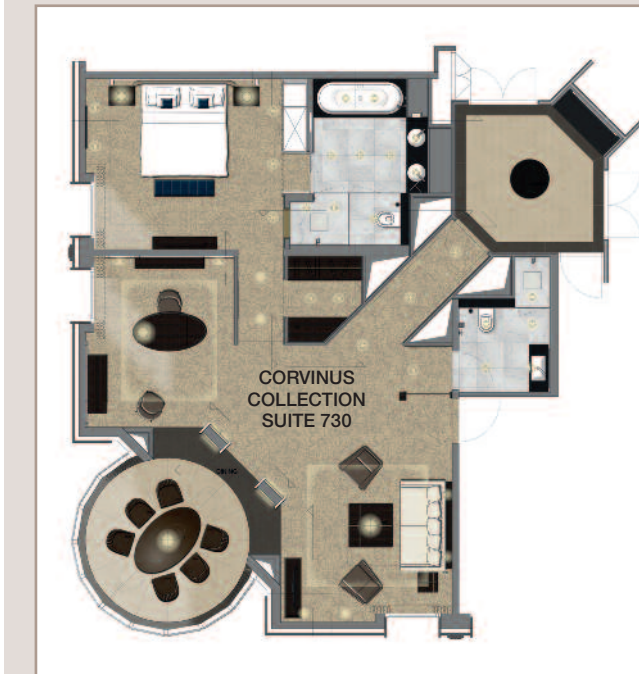
Corvinus Collection Suite 730 & 830

The ultimate in Corvinus luxury, Suite 730 and Suite 830 ensure a right royal experience. We envisioned a striking design accented with elegant grey and comforting beige throughout the maximised space, outfitting the living and work rooms, the bedroom and the bathrooms with enhanced functions and charming touches. Graced with the hotel's own artwork, these suites draw in central Budapest's urban landscape, from its iconic heritage edifices to the Budapest Eye, the ferris wheel in Erzsébet Park.



FACTS & FIGURES

- no.** Inventory: 2
- sq** Size: 104 sqm / 1118 sqft
- View:** Ferris wheel view
- Bed:** Eastern King
- Extra bed:** Yes
- Bathroom:** Bath, Shower
- Maximum occupancy:** 3 Adults
- Interconnecting:** To adjoining Premium Junior Suites



Additional luxury services

LIMOUSINE TRANSFER

Safe and comfortable, our Limo Service makes transfer to and from the hotel part of a luxurious journey.

BUTLER

A comprehensive range of services remain open and available throughout the entire day and night, anticipating all eventualities when you may need bespoke personal assistance.

KEMPINSKI THE SPA

Complete with the latest technology fitness equipment and various types of saunas and steam rooms, Kempinski The Spa offers a wide range of relaxing and rejuvenating treatments, among them its signature Hungary Mud regime, harnessing the power of locally sourced mineral-rich active ingredients.

GASTRONOMIC QUARTER DOWNTOWN BUDAPEST

A diverse culinary experience, GQDB is home to a range of iconic and one-of-a-kind gastronomic outlets – Nobu, ÉS Bisztró, ÉS Deli, The Living Room, Blue Fox The Bar.

IN-ROOM DINING

Culinary options from the outlets of Gastronomic Quarter Downtown Budapest are available to order any time of the day and night.

NOBU

The first Central European restaurant of the world-famous chain, New Japanese cuisine's Budapest outpost serves signature Nobu as well as locally inspired dishes.

BENEDICTION BRUNCH

The Living Room, our remake of the Budapest coffeehouse experience, invites to spend a long lazy late morning on Saturdays and Sundays, serving Eggs Benedict inspired and turbo-charged by sumptuous ingredients such as caviar and accoutrements such as champagne, and live DJ ambient music.

ÉS BISZTRÓ

Austro-Hungarian imperial cooking at its best, ÉS Bisztró reimagines a precious historical heyday's favourite (now rare) delicacies in a contemporary fashion.

BLUE FOX THE BAR

Serving classic and creative cocktails, Blue Fox The Bar is the city's most central and inventive cocktail bar, which spills out onto a terrace in the summer.

Kempinski
The Spa

NOBU
BUDAPEST

THE LIVING
ROOM

ÉS
BISZTRÓ

BLUE
FOX
THE BAR

Kempinski Hotel
Corvinus Budapest
Erzsébet tér 7-8
1051 Budapest
Hungary

T +36 1 429 3777
+36 1 429 3375 (Reservations)
F +36 1 429 4777
reservations.corvinus@kempinski.com
kempinski.com/budapest

GPS Long: E 19.0523529 / 19°3'8
GPS Lat: N 47.4969111 / 47°29'49

KEMPINSKI.COM

